

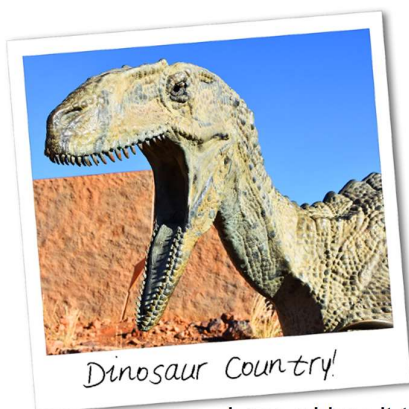
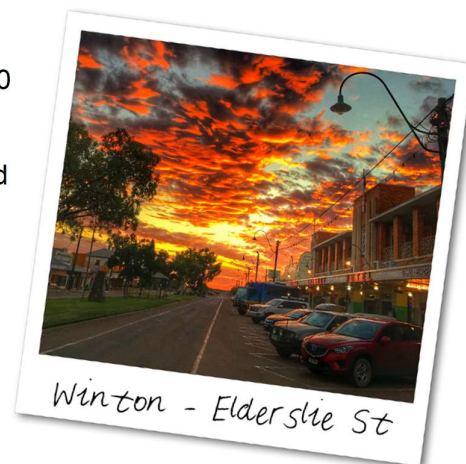


# Information Package

## About Winton Shire Council

Winton is in Central Western Queensland on the Landsborough Highway, 180 kilometres northwest of Longreach and 472 kilometres south east of Mount Isa. Winton is approximately 1,500 kilometres from Brisbane, covering 53,935 square kilometres and boasting a population of around 1,600 people. Home to diverse landscapes with rolling Mitchell Grass Downs suddenly interrupted by mesa formations, starkly beautiful red earth and spinifex country, Channel Country and undulating plains as far as the eye can see with a myriad of dry channels, waiting for the wet season.

Winton has a rich history with links to the Great Shearers' Strike, Waltzing Matilda and QANTAS, but today the town is almost as well known for something far more ancient... dinosaurs.



The first official dinosaur discovery in Winton Shire was made in 1962, approximately 110km South-West of Winton – a fossilised footprint with the site later revealing a stampede with over 3,300 footprints. Later discoveries were the then largest dinosaur found in Australia a 20-30 ton Sauropod nicknamed “Elliot” discovered on a property outside Winton in 1999, and his friends, more Sauropods of the group called Titanosaurs (the largest dinosaurs to walk the earth) in varying sizes and types – and “Banjo”, Australia’s largest known carnivorous dinosaur. Winton is known as the home of Waltzing Matilda, with A B (Banjo) Paterson writing our national song in 1895, whilst visiting Dagworth Station.

Legend has it that the first public performance of Waltzing Matilda happened at Winton’s North Gregory Hotel on 6th April 1895.

Twenty-five years later, Winton became the birthplace of the Queensland and Northern Territory Aerial Service (QANTAS), registered as a company in Winton on 16th November 1920. This was followed by its first Board Meeting in 1921, held on the 10th February at the Winton Club. Later in 1921, the Winton Shire Council became the first local authority in Australia to support Commercial Aviation after subsidising by half the costs of establishing a landing field in Winton, to the sum of £20. The local expression is that QANTAS was conceived in Cloncurry, born in Winton and grew up in Longreach! When the area was settled in the late 19th century, the region’s low annual rainfall made it ideal for sheep, and up to 1.5million sheep have been grazed during a past good season. In recent times, graziers have increasingly shifted from wool production to beef production. The opal mining industry also flourishes in Winton, and has for more than a century. Some of the best boulder opal has been found from claims within the Winton Shire.



## Towns of the Winton Shire

### Winton

Winton Township is located on the Matilda Highway, between Longreach and Kynuna and is the gateway to Australia's Dinosaur Trail and the Outback Way. Winton town is the Shire administration centre and is known for friendly hospitality and big smiles. The town boasts a selection of good affordable accommodation, caravan parks, great food outlets, Searles Outback Store, various retail outlets and general stores for all your travelling needs. There is opportunity to get involved in the local atmosphere during one of Winton's many events and festivals, including Waltzing Matilda Day, Diamantina Camp Draft, Turf Club Races, Drag Racing, Camel Races, Film Festival, Opal Festival and the Winton Outback Festival (bi-annually) to name just a few.



### Opalton

Is the home of Queensland Boulder Opal and lies 123 kilometres south-west of Winton. Opal was first discovered in Winton by George Cragg in 1888 and the first mine was worked in 1894. By the end of the 19th Century there was a bustling township of 600 and Opalton became known for the enormous quantity and quality of its opal. Notably, in 1899 the largest piece of opal ever recorded was mined from Opalton, a pipe opal that measured more than three metres long.



### Corfield

Is a tiny town located 90 kilometres north of Winton on the road to Hughenden. The town can be identified only by the small cluster of buildings on the rolling Mitchell grass downs. Once a busy railway siding, Corfield is now known for the annual "Corfield Cup" race meeting, when the population explodes with people visiting from near and far.



### Middleton

Located 164 kilometres along the Winton-Boulia Road, Middleton made history in 1862, when McKinlay and his search party for Burke and Wills, entered the area. In fact, Middleton's name is derived from this search party after a creek named for the man second in charge – Middleton.



## Council Organisation

The Winton Shire Council Mayor and five (5) Councillors are the decision-making body and matters for consideration are directed through regular Council meetings. Ordinary meetings of council are held on the third Thursday of the Month. Special Meetings are convened when necessary to consider specific items such as budget, major projects and future directions.



Cr Gavin Baskett  
**Mayor**

Cr Tina Elliott  
**Deputy Mayor**

Cr  
Frank Standfast

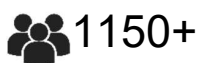
Cr Shane Mann

Cr Anne  
Seymour

Cr Cathy White

The Winton Shire Council is managed by its Chief Executive Officer and the Directors of:

- Finance
- Human Resources
- Community Services
- Economic Development
- Works and Utilities



Population



Staff



Total Budget



Community Assets

There are 126 staff providing services and managing assets within an annual operating budget of more than \$ 31million, Capital Budget of \$ 25 million and Net Community Assets of \$277 million.

## Mission Statement

Winton Shire Council's Mission Statement:

"Through meaningful engagement, implement a range of strategies that cater to people from all walks of life, our community needs and aim to enrich our lifestyle and preserve our heritage".

## Vision

"To grow our community and explore exciting, new and innovative opportunities which will retain existing and attract new people with whom we can share our unique lifestyle and rich heritage".

## **Corporate Values**

### **Accountability**

The ethical concept associated with responsibility, enforcement, blameworthiness, transparent process, liability and other terms associated with being answerable for the trust that is bestowed by those whom we serve.

### **Effectiveness**

The idea of carrying out a program or process that is entirely adequate to accomplish the purpose that has been identified as a goal or aspiration.

### **Efficiency**

The concept that in the process of pursuing or effecting any program, procedures or task where all wastage is minimised.

### **Sustainability**

Is the capacity to maintain a certain process or state indefinitely. When applied in an economic context, a business is sustainable if it has accepted its practices for the use of renewable resources and is accountable for the environmental impact of its activities.

### **Meaningful community engagement**

Encompasses the principle of seeking the views and opinions of the Community. This is to be through an effective committee system and public consultation process as part of Council's decision-making methodology.

### **Good governance**

This describes the process of decision-making and the process by which decisions are implemented (or not implemented), hereby, public institutions conduct public affairs, manage public resources and guarantee the realisation of human rights.

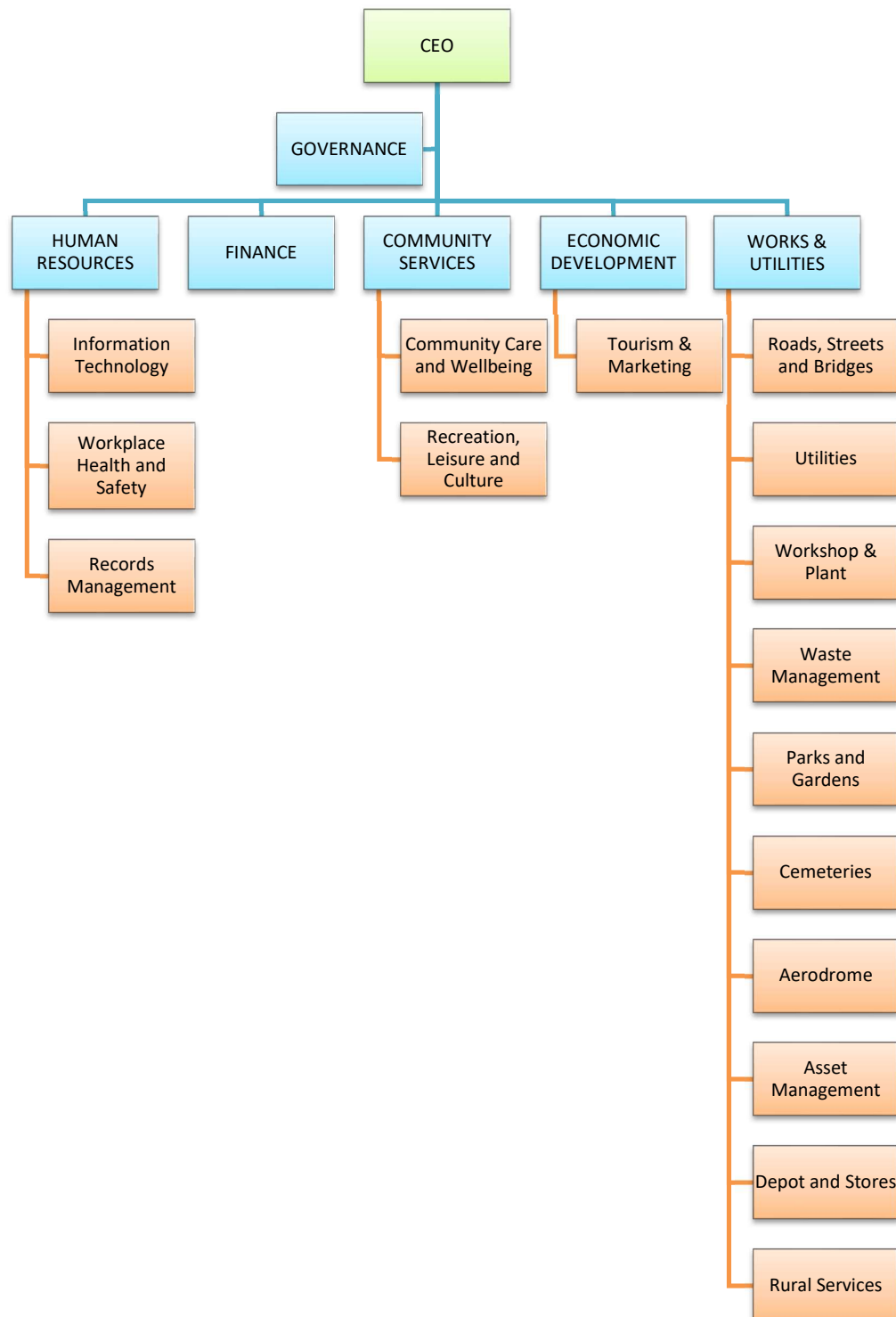
Good governance accomplishes this in a manner essentially free of abuse and corruption and with due regard for the rule of law.

### **Ethical and legal behaviour**

Ethical behaviour is characterised by honesty, fairness, and equity in all interpersonal relationships. Ethical behaviour respects the dignity, diversity and rights of individuals and groups of people.

When coupled with legal behaviours there is an expectation that there will be a penalty for conduct that breaches any law statute or regulation.

## Corporate Structure



## Recruitment process

Candidates should lodge their applications in accordance with the directions outlined in “How to Apply for the Position” below.

### How to apply for the position

We invite you to lodge a formal application which **MUST** include a:

- **Resume,**
- **Cover letter, and**
- **Response to the Selection Criteria (SECTION 9 of the Position Description)**

Completed applications are to be forwarded to: [jobs@winton.qld.gov.au](mailto:jobs@winton.qld.gov.au)

### Shortlisting and interviews

The Shortlisting of all applicants will be undertaken by a Selection Panel within five (5) working days after receipt of a completed suitable application. Interviews may be conducted face to face, or via video-conferencing or tele-conferencing, depending on the location of candidates and the technology available at the time.

### Further information

For further information in relation to this position please contact Winton Shire Council, on 07 4657 2666.